



First Looks

• On-Line Communications

Golden CommPass: The OS/2 Way to Tackle CompuServe

BY JOE SALEMI

Creative Systems Programming Corp.'s Golden CommPass is the only OS/2-based off-line navigation program for CompuServe. The \$99 Version 2.1 brings the package up to full 32-bit power while maintaining compatibility with the popular TAPCIS navigation program. Golden CommPass is an ideal tool for OS/2 2.x users looking for a less expensive and simpler way to interface with CompuServe.

Since the beginning, Golden CommPass has been completely compatible with TAPCIS; it uses the same file formats. It's also compatible with TAPCIS add-ons that help you manage messages.

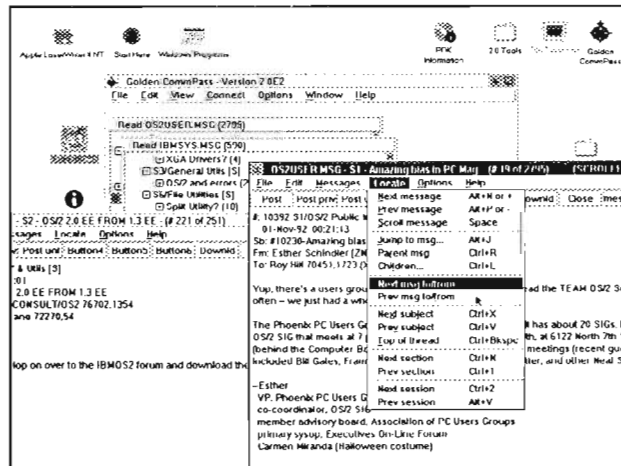
But that's where the similarities end. Golden CommPass gives you a number of features that aren't possible under DOS, and the most obvious is access to OS/2's Presentation Manager. This is a graphical app, and it provides dialog boxes, pick lists, and drag-and-drop capabilities. Icons represent read and unread forum messages, messages waiting to be uploaded, and requests for a catalog from a library.

Golden CommPass also takes full advantage of OS/2's multitasking and multithreading capabilities. Because it is a native OS/2 application, it can

download messages in the background without significantly affecting system performance. The communications engine and message reader run in separate threads, so you can even begin to read messages downloaded from one forum while Golden CommPass continues to download from others.

Golden CommPass is a full 32-bit application, which really helps when you load and index large message and catalog files. On our 66-MHz 486 test system (with 8MB of RAM), we were able to start reading new messages within a second of clicking on the forum's icon.

As you might expect, Golden CommPass is



MULTITHREADING keeps things moving.

supported on CompuServe, in the CIS:GCPSUPPORT forum. Current users can use the forum to get help with the program, as well as the latest patches and updates. CompuServe (and ZiffNet) are important resources for OS/2 users, and Golden CommPass provides the best way to make effective use of those resources.

• List Price: *Golden CommPass 2.1*, \$99. Requires: 6MB RAM, 2MB hard disk space, OS/2 2.0 or later. Creative Systems Programming Corp., P.O. Box 961, Mount Laurel, NJ 08054; 609-234-1500.